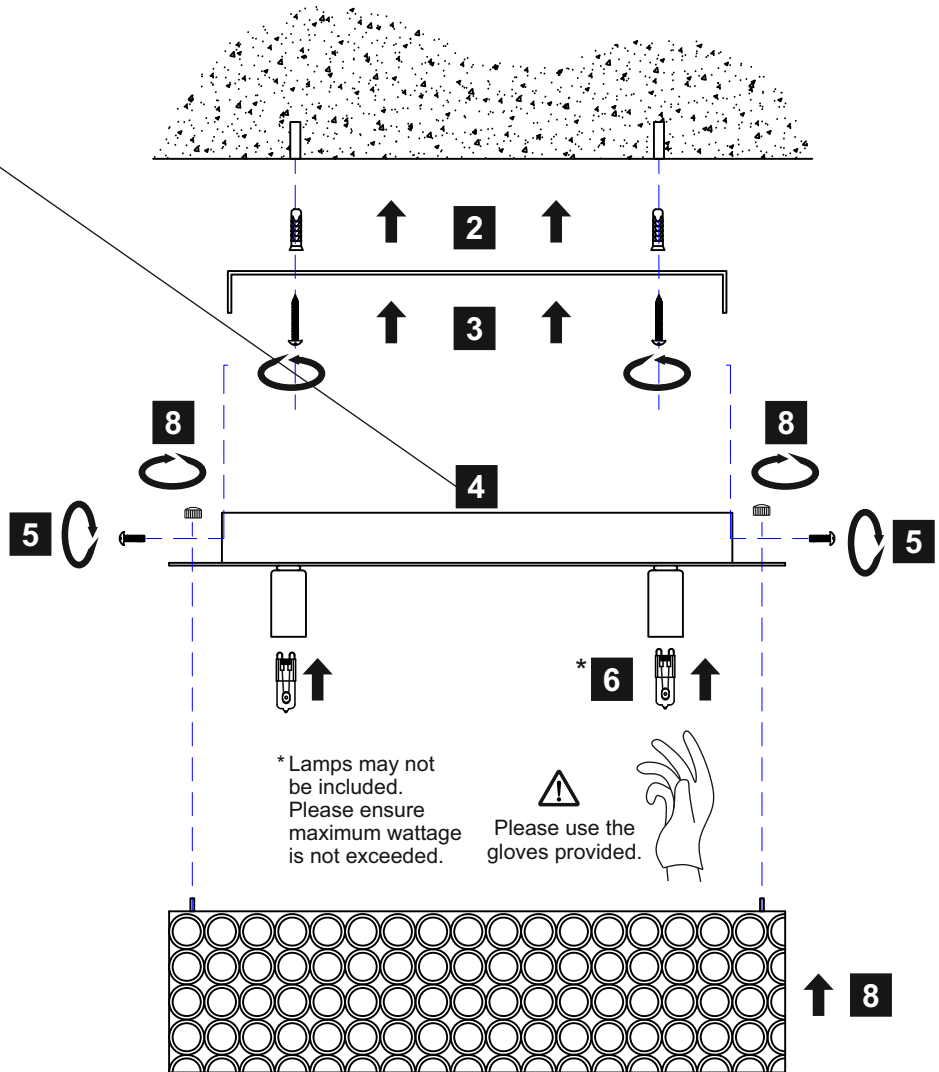
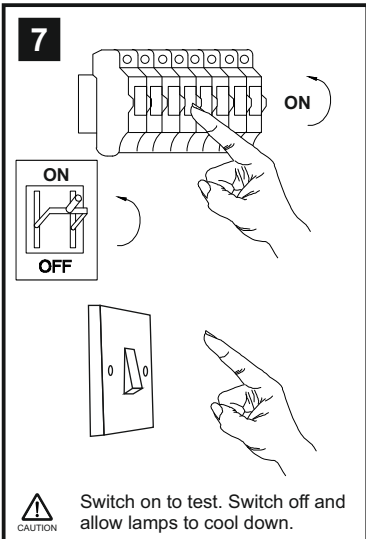
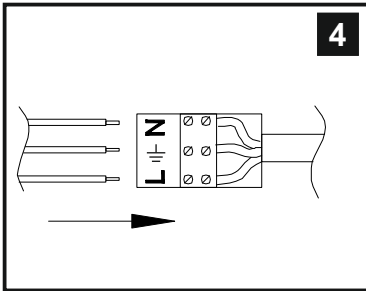
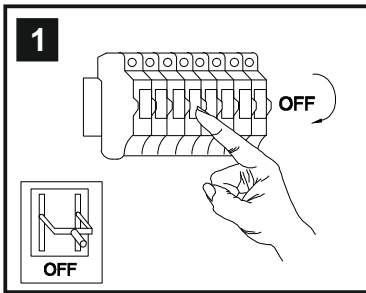


INSTALLATION INSTRUCTIONS

(ILLUSTRATIONS ARE FOR GUIDANCE PURPOSES ONLY. ACTUAL PRODUCT MAY DIFFER FROM THE IMAGES SHOWN)



Installation Pack

White Gloves	2 Pcs	
Installation Instructions	1 Page	
Installation Guidelines	2 Pages	
Fixing Screw & Plugs	2 Sets	

Contents Checked By	
---------------------	--

! (1) Prior to installation carefully unpack and check all the components and accessories are as per details enclosed.

(2) These instructions should be used in conjunction with the installation guidelines included.

Voltage: 230V - 50/60Hz
Lampholder: G9
Lamps: 4 x 33W Max

CE WITH SUITABLE DIMMER/LAMP

Piazza IL30431

diyás®