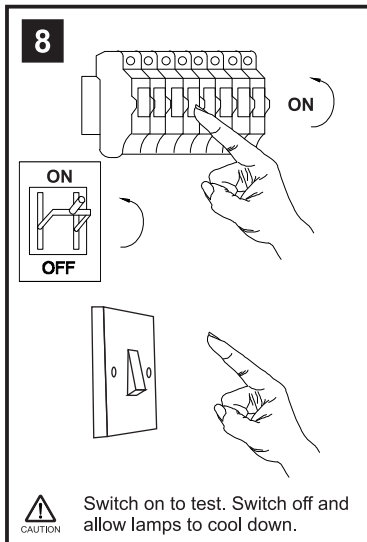
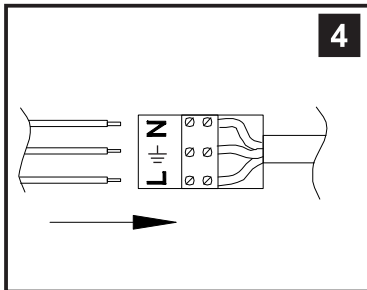
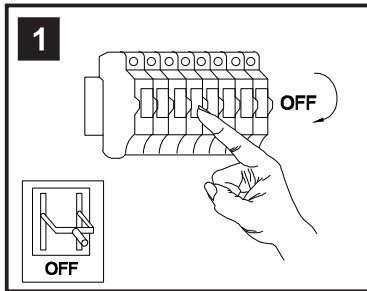


INSTALLATION INSTRUCTIONS

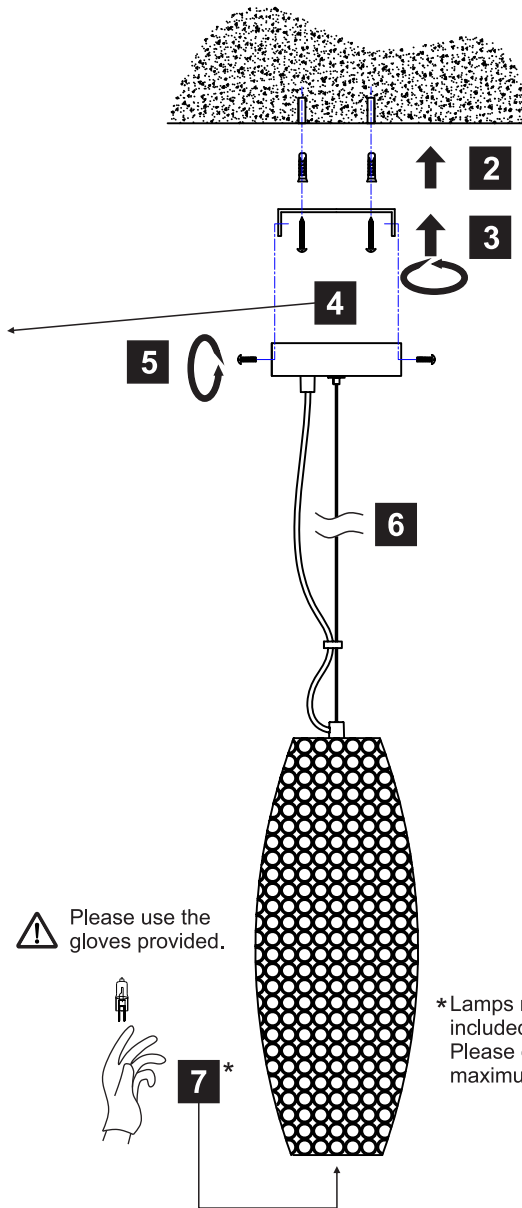
(ILLUSTRATIONS ARE FOR GUIDANCE PURPOSES ONLY.
ACTUAL PRODUCT MAY DIFFER FROM THE IMAGES SHOWN)



- (1) Prior to installation carefully unpack and check all the components and accessories are as per details enclosed.
- (2) These instructions should be used in conjunction with the installation guidelines included.

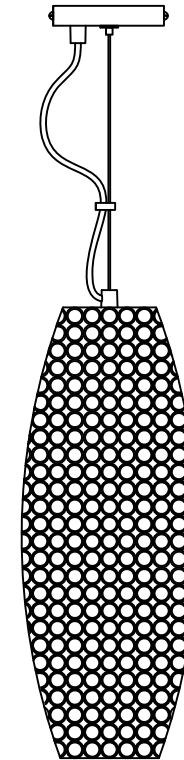


CAUTION Switch on to test. Switch off and allow lamps to cool down.



Please use the gloves provided.

*Lamps may not be included.
Please do not exceed maximum wattage.



Installation Pack

| | | |
|---------------------------|---------|--|
| White Gloves | 2 Pcs | |
| Installation Instructions | 2 Pages | |
| Installation Guidelines | 2 Pages | |
| | | |
| | | |
| | | |
| Contents Checked By | | |

Voltage: 230V - 50/60Hz
Lampholder: G9
Lamps: 4 x 33W Max



COMPATIBLE



WITH SUITABLE
LAMP/DIMMER



Kos IL30410 / IL30765

diyás[®]