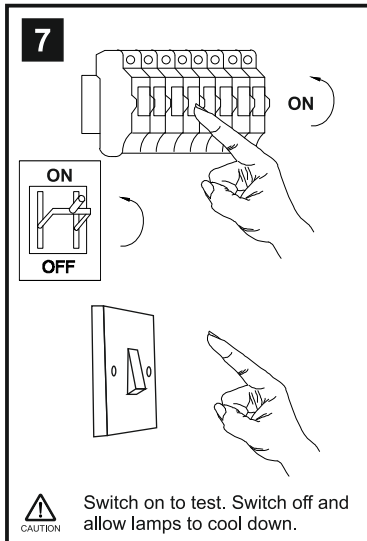
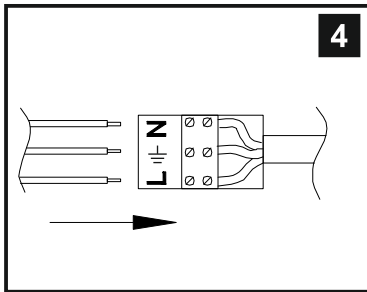
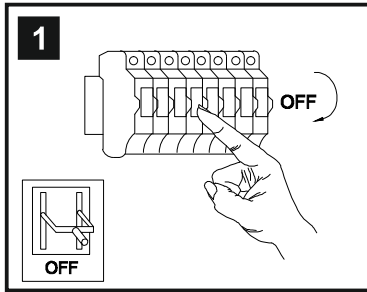


# INSTALLATION INSTRUCTIONS

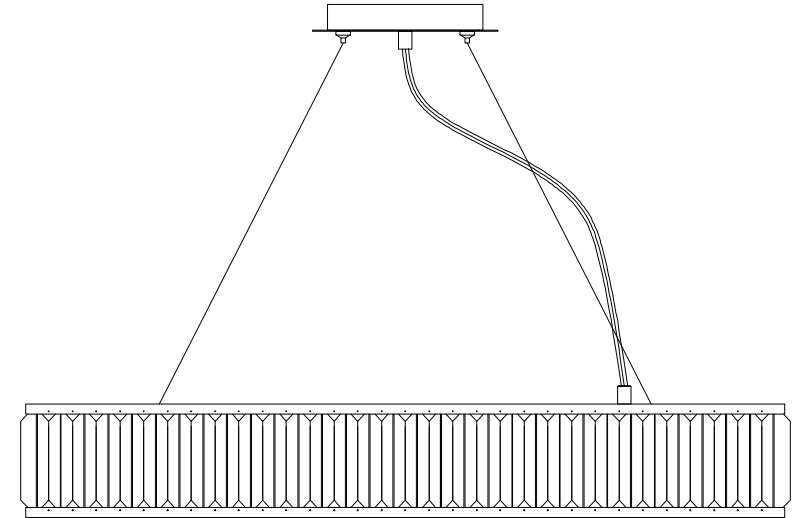
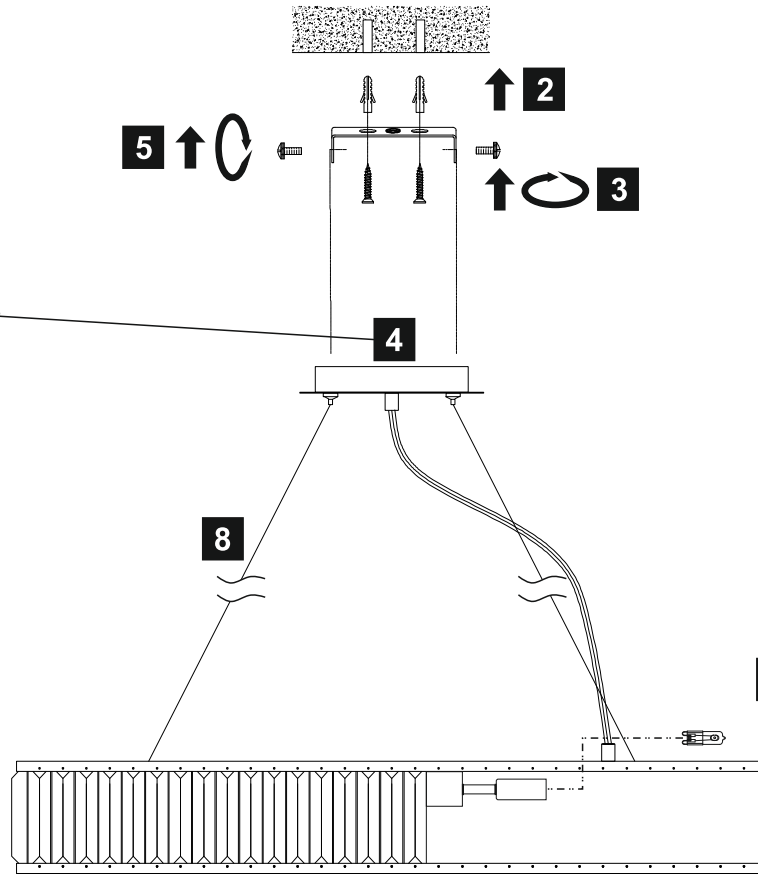
(ILLUSTRATIONS ARE FOR GUIDANCE PURPOSES ONLY.  
ACTUAL PRODUCT MAY DIFFER FROM THE IMAGES SHOWN)



- (1) Prior to installation carefully unpack and check all the components and accessories are as per details enclosed.
- (2) These instructions should be used in conjunction with the installation guidelines included.



**CAUTION** Switch on to test. Switch off and allow lamps to cool down.



\* Lamps may not be included. Please ensure maximum wattage is not exceeded.



Please use the gloves provided.

## Installation Pack

White Gloves	2 Pcs	
Installation Instructions	1 Page	
Installation Guidelines	2 Pages	
Fixing Screw & Plug	2 Sets	

Contents  
Checked By

**Voltage:** 230V - 50/60Hz  
**Lampholder:** G9  
**Lamps:** 10 x 33W Max



COMPATIBLE



WITH SUITABLE  
DIMMER/LAMP



Torre IL30099

**diyás**<sup>®</sup>